

SPEE.tectonics

The art of creating things that have both beauty and usefulness



Knowledge for Creating and
Sustaining the Built Environment

September 2011

SEPTEMBER 26TH MEETING

PROGRAM:\

PLACE:

H.E.S.S. Building
5430 Westheimer

TIME:

5:30 P.M. (Registration and
mixer)

6:00 P.M. (Evening Meal
and Meeting)

DATE:

MONDAY,
SEPTEMBER 26, 2011

COST:

\$30.00 Per Person; Free to
CSI members.

RESERVATIONS:

Please e-mail:
csihouston@gmail.com

Inside this issue:

<i>CSI Chapter Program</i>	1
<i>President's Message</i>	3
<i>Fellowship Reception</i>	3
<i>Houston CIC Report</i>	4
<i>CSI Sponsor</i>	
<i>Advertisements</i>	5
<i>Board Meeting Minutes</i>	6
<i>CSI Member Loyalty</i>	
<i>Program</i>	7
<i>Using CSI National to Find</i>	
<i>Your Next Job</i>	7
<i>CDT Training</i>	8
<i>Membership Chair Report</i>	9
<i>Golf Sponsorship Form</i>	10
<i>Strictly Smith-ly</i>	11
<i>Calendar</i>	12

CSI Houston Website:
<http://www.csihouston.org>

September CSI Houston Chapter Program

Design and Specification of ACM/MCM in Today's Architecture

Presented by

Tom Ratway

**Alpolic Composite Materials
Mitsubishi Chemical America F.P. America, Inc**

Presenter for the September 22nd CSI Houston Chapter program will be Tom Ratway, Tom_Ratway@m-chem.com, with Alpolic <http://www.alpolic-usa.com>. His presentation is entitled "Design & Specification of ACM/MCM in Today's Architecture."

Presentation includes:

- **ACM/MCM defined**
- **Performance characteristics of composite material**
- **The code and the product**
- **Manufacturing/material parameters/design considerations**
- **Various applications**
- **System solutions**

Program attendees can receive 1 hour AIA/CES CEU credit.

Coming in October . . .

The presenter for the October 24th CSI Houston Chapter program will be presented by Pat McIntosh with AGC Interedge Technologies. His presentation is entitled "Fire Rated Glazing Today."

CSI HOUSTON CHAPTER
2010—2011 CHAPTER OFFICERS

President Robert M. Cook, CSI, AHC
(832) 496-9507
Robert.Cook@sbdinc.com

President Elect James Sandoz, CSI, CCS AIA LEED AP
jsandoz@fkp.com
(713) 821-9266; cell (832) 405-8541

Past President Thomas Atwell, CSI, CDT, AIA
(713) 783-6768
tat10706@aol.com

VP Member Services Neil Byrne, CSI, CPA
NPByrne@byrnetmetals.com
cell (832) 233-4619

VP Public Services Lisa Murray, CSI, CCS, LEED AP
(713) 294-7387
lisa@mosaicdesignspec.com

VP Professional Development Mark Koehler, CSI
(713) 302-6636
mkoehler@siplast.com

VP Finance/ Admin. Don Smith, CSI, CCS, AIA, LEED AP
(713) 688-0092
don.smith315@sbcglobal.net

Secretary Betsy Finch, CSI
(713) 806-3401
betsy.finch13@gmail.com

Treasurer Chuck Vojtech, CSI
(281) 227-3577
chuck@rpcinc.com

2010—2011 BOARD OF DIRECTORS

Director through 2013 Amt Peevey, PE, RRO, CDT
(713) 467-9840
apeevey@besgrp.com

Director through 2013 Holly Jordan, CSI, CCS, LEED AP, SCIP
(713) 366-0320
hjordan@jordanconsultants.com

Director through 2012 Di Ann Reid, CSI, CCS, CCCA, LEED AP
(713) 844-0091
diann_reid@gensler.com

Director through 2012 Doug Frank, FCSI, CCS
(713) 621 2100
dfrank@fkp.com

Director through 2011 Bill Fairbanks, CSI, CCPR
(281) 227-3577
fairbanks@rpcinc.com

Director through 2011

Director, Emeritus Larry Adams, CSI, DAHC
(281) 448-7279

2010—2011 CSI HOUSTON SPEC.TECTONICS

SPEC.tectonics Editor Don Smith, CSI, CCS, AIA, LEED AP
(713) 688-0092
don.smith315@sbcglobal.net

2010—2011 COMMITTEE CHAIRS

Program Janet Babineaux, CSI
(281) 221-8353
JBabineaux@brick.com

Membership Amanda Carrington, CSI
(832) 405-7166
acarrington@archmetalroof.com

Certification Holly Jordan, CSI, CCS, LEED AP, SCIP
(713) 366-0320
hjordan@jordanconsultants.com

Technical J. Peter Jordan, FCSI, CCS, LEED AP, SCIP AIA
(713) 366-0320
jpjordan@jordanconsultants.com

Awards Amy Salmeron, CSI, CDT
asaltx@gmail.com

Scholarship Frank Bain, CSI
(713) 827-8844
fbain@wallcoveringsintl.com

Continuing Education Mark Koehler, CSI
(713) 302-6636
mkoehler@siplast.com

Academic Affairs Logan Vits, CSI, CCPR, LEED GA
(713) 703-5201
lvits@assaabloydss.com

Public Relations Logan Vits, CSI, CCPR, LEED GA
(713) 703-5201
lvits@assaabloydss.com

Product Show (CTE) Di Ann Reid, CSI, CCS, CCCA, LEED AP
(713) 844-0091
diann_reid@gensler.com

Golf Tournament Holly Jordan, CSI, CCS, LEED AP, SCIP
(713) 366-0320
hjordan@jordanconsultants.com

Table Top Holly Jordan, CSI, CCS, LEED AP, SCIP
(713) 366-0320
hjordan@jordanconsultants.com

CIC Delegate Di Ann Reid, CSI, CCS, CCCA, LEED AP
(713) 844-0091
diann_reid@gensler.com

2010—2011 CSI HOUSTON WEBSITE

Webmaster Lisa Murray, CSI, CCS, LEED AP
(713) 294-7387
lisa@mosaicdesignspec.com

2010—2011 CSI FOUNDATION

President Frank Bain, CSI
(713) 827-8844
fbain@wallcoveringsintl.com

Vice President Robert M. Cook, CSI, AHC

Secretary Dorothy Gumm Denison, CSI, CCS

Treasurer Brett Wilbur, CSI, CCS, RA

At Large Position 1 Harold W. Woolard, FCSI

At Large Position 2 Greg L. Roberts, FCSI, CCS, CCCA, FAIA

At Large Position 3

CSI SOUTH CENTRAL REGION

President Kathleen Liles, CSI, CDT (713) 854-6783 kannliles@aol.com	Director, Dorothy Gumm Denison, CSI, CCS (713) 962-4209 dotgumm@sbcglobal.net
Vice President Holly Jordan, CSI, CCS, LEED AP, SCIP (713) 366-0320 hjordan@jordanconsultants.com	Webmaster, Lisa Murray, CSI, CCS, LEED AP (713) 294-7387 lisa@mosaicdesignspec.com

September 2011

President's Message

by Robert M. Cook, CSI, AHC

I hope you all had a WONDERFUL "Labor Day" holiday weekend. If you're like me, it gave you a chance to get some things done around the house you have not had time for more work! Ironic isn't it! With summer winding down, I wanted to talk to everyone about a few items to help our Chapter and give you all some information.



As you know the CSI National Convention will be Sept 13th - 16th, and our own J. Peter Jordan is receiving his Fellow recognition at the convention. Congratulations to him and all of our Houston Chapter Fellows who all continue to support our Houston Chapter.

Please reach out to your acquaintances and those you work with. Tell them how much CSI has helped you and encourage them to attend the next meeting with you.

CSI is getting involved with documents to help our members be competitive and to continue to "LEAD" rather than follow with the purchase of Speclink and the introduction of Master Format 2011. I read that DHI is involved with Consensus DOCS to help the Hardware industry do the same. Our business is changing fast and I want to encourage all of you to continue your education by keeping up to date with as much information as you can. This will make you a wanted commodity as the skilled work force continues to shrink.

Thanks to everyone who helps make our Chapter run smoothly and continue to operate month-after-month. I don't know if you all realize what goes on behind the scenes each

month. It takes a lot of work by dedicated people month after month to accomplish this. All the officers, board members, secretary, and committee members, etc. Thank you all!

You're all invited! CSI is a volunteer organization! We look forward to having some of the other members involved. Please see me or one of the other Chapter officers and tell them what you want to do. (See list of Committees in the monthly newsletter) If you don't know ask what we have or who needs someone to help and we can fill you in!

Have a wonderful month, and I will see you on the 26th with your guest!

Houston Fellowship Reception

Please join the Houston CSI Chapter for a Reception honoring Houston members who have been elevated to Fellowship including J. Peter Jordan who will be elevated at the CSI Gala in Chicago.


Reception to be held Wednesday, September 21, 2011 from 5:30 to 8:00 p.m. at Western Brick Company, 7620 Washington Avenue.

Jordan Consultants, LLC

Holly A. Jordan, CSI, CCS, LEED AP

Tel: (713) 366-0320

hjordan@jordanconsultants.com



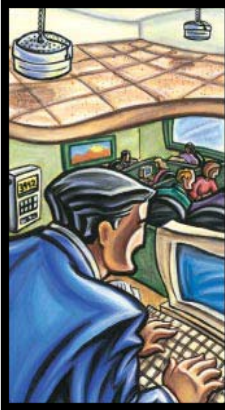
TPCCI

*Manufacturer's Representative
Waterproofing Products
Concrete Accessories
Specialty Coatings*

JOHN M. ZIEBELL

26911 Bridleway Circle
Magnolia, TX 77355

(832) 746-3507
johnziebell@att.net



Kathleen Liles, CSI, CDT

7925 County Road 684
Sweeny, TX 77480

Tel (713) 854-6783
Toll Free (877) 854-6783
Fax (979) 345-2099
Email kliles@archoustics-south.com
Web www.archoustics-south.com

FEATURE YOUR PRODUCTS WITH A TABLE TOP DISPLAY

At each monthly meeting, the Chapter encourages Industry Members to provide a table top display of their products and services for the inspection and education of those attending the meeting.

The table top display is also encouraged to be presented during the social hour and after the program for any questions by attendees.

The presentation fee for this time is \$100 for members and \$150 for non-members, or free with a Golf Sponsorship pledge. See page 10 for details.

Houston Code News and Events

By Di Ann Hassloch, CSI, CCS, CCCA, LEED AP

New Electrical Code - Effective 09/01/2011.

On August 10, City Council approved the adoption of the 2011 National Electrical Code and local amendments.

New Commercial Energy Codes - Effective 09/02/2011.

September 2, 2011, commercial buildings and structures shall comply with the 2009 IECC or 2007 ASHRAE 90.1, pursuant to Section 19.53 of Chapter 34, Texas Administrative Code.

In accordance with this provision and the rules thereto, the City has reviewed the codes and has proposed amendments for review by the Energy Systems Laboratory.

Please visit the City of Houston Form & Publications Page at <http://www.houstonpermittingcenter.org/code-enforcement/code-updates.html> to access the new Commercial Energy Codes

New Construction Codes—Effective 12/31/10.

On November 3rd, City Council approved the 2006 Code Package to adopt updated Construction Codes. The new amendments are available at our Forms & Publications page.

Texas Adopts New Energy Code 2009 IECC effective April 1st, 2011. The major points to be guided by for the building envelope are:

- All commercial projects will need insulated glass. No more monolithic exceptions for small window to wall ratios.
- All commercial projects will need to exhibit an SHGC (Solar Heat Gain Coefficient) of .25 or less. This is a major revision and improvement to save energy for our building owners. There are exceptions for projection factors i.e. shading.

As published in the Texas Register today: ADOPTED RULES June 4, 2010 35 TexReg 4727

Current codes in the City of Houston include:


- Building Code: 2006 IBC with Houston Amendments.
- Residential Code: 2006 IRC with Houston Amendments.
- Electrical Code: 2011 NEC with Houston Amendments—1st Printing.
- Mechanical Code: 2006 UMC with Houston Amendments.
- Plumbing Code: 2006 UPC with Houston Amendments.



- Solarban[®] Solar Control Low-E Glasses
- Oceans of Color[®] Spectrally Selective Tinted Glasses
- DURANAR[®] SPF ENERGY STAR-compliant high-performance coatings
- CORAFLO[®] ADS colorful, field-applied fluoropolymer coatings
- CORAFLO[®] and ENVIROCRON[®] Zero-VOC powder coatings
- Pure Performance[®] Zero-VOC paint from Pittsburgh[®] Paints
- Megaseal[®] Hygienic Industrial and Commercial Flooring Systems



To find out more information about PPG Architectural Glass, Coatings and Paint, go to: www.ppgideascpes.com

Contact:  Carl Metzroth, CSI, at 281-610-4854, or e-mail: Metzroth@ppg.com
Deron Patterson, CSI, at 281-841-0829, or e-mail: Patterson@ppg.com

The only Cradle to Cradle Certified^{CM} Architectural Glass

WHERE IS YOUR BUSINESS ADVERTISEMENT?

A quarter page ad is only \$250 for 12 issues

A half page ad is only \$500 for 12 issues

A business card ad is only \$225 for 12 issues

Contact Don Smith at
(713) 688-0092 or

don.smith315@sbdglobal.net

for more information.

CSI BOARD MEETING MINUTES

Houston Chapter CSI

Location: HESS Building - 5430 Westheimer Road - Houston, TX
July 25, 2011

Present: Amy Peevey, Betsy Finch, Bill Fairbanks, Chuck Vojtech, Di Ann Reid, Don Smith, Doug Frank, Holly Jordan, James Sandoz, Lisa Murray, Logan Vits, Mark Koehler, Neil Byrne, Tom Atwell

President-elect James Sandoz called the meeting to order at 4:07 p.m.

REPORTS

Member Services: Neil Bryne

Programs: Janet Babineaux

No report.

Membership: Amanda Carrington

No report.

Awards: Amy Salmeron

No report.

Finance/Administration: Don Smith

Treasurer's Report: Chuck Vojtech

Budget for 2011-2012 was presented. Number and categories were noted to be the same as last year. There were several concerns noted and referred for further review and clarification.

Table Top Display: Holly Jordan

There would be no table top display at this months chapter meeting. Pricing was discussed and confirmed that members may purchase a table top for \$100 and non-members for \$150.

Public Services: Lisa Murray

Golf Tournament: Holly Jordan

Holly reported sponsorship forms will be available at the check-in table at the chapter meeting and the golf committee had their first meeting.

Spec.tectonics: Don Smith

Don reported the July newsletter was posted on the website and included information about CSI regional and national.

Electronic Communications: Lisa Murray

Lisa reported there is still a problem with Classic Labs, they have not released the domain name. She is working with them on this situation. Members are to provide any changes in their contact information to Lisa.

Public Relations: Logan Vits

Logan mentioned he will be in contact with AIA and other organizations and provide them with our monthly chapter meeting information.

Professional Development: Mark Koehler

Continuing Education: Mark Koehler

Mark reported our AIA status is up for renewal and he will handle this.

Academic Affairs:

Mark stated this position has to be filled. Mark spoke with Robert Byrne about chairing the position and is waiting for his response.

Certification: Holly Jordan

Holly reported the CDT study classes will start August 3 and will be held at Wallcoverings International, 1012 Campbell Road. The fee is \$75 for members and \$100 for non-members.

Technical Committee: J. Peter Jordan

No report.

Scholarship: Frank Bain

No report.

New Business:

Tax Exemption Issue Status: Tom Atwell

No report.

Approval of Foundation Board officers: Frank Bain

This will be presented at the August 2011 Board Meeting.

Paypal Payment:

Board discussed this situation and will need further clarification regarding Paypal and fees.

Fellows Reception:

A reception has been planned for September 21, 2011 by Holly Jordan and she asked for a donation from CSI Houston Chapter. Tom Atwell, Bob Cook, Don Smith and Chuck Vojtech will review this.

Membership Directory: Tom Atwell

Tom has volunteered to work on updating the membership directory.

Meeting adjourned at 5:35 p.m.

**Betsy Finch, CSI
Chapter Secretary**

CSI Member Loyalty Program

By CSI National

CSI's Member Loyalty Program is designed to assist:

- Members whose employers can no longer pay for membership dues.
- Members who have been laid off.
- Members who are being hit hard by the economic crisis and cannot afford to pay for membership dues

CSI is offering a 6 month grace period for membership renewal to members who are facing issues listed above.

Eligibility Requirements:

1. The member must be in the Professional, Associate, or Industry level of membership.
2. The member must either:
 - Have been laid off
 - Have an employer who can no longer pay dues
 - Be undergoing financial hardship due to economic constraints
3. Convey this information to CSI

Contact CSI Member Services at **800-689-2900** for more information.

Using CSI National to Find Your Next Job

By CSI National

Here are some ideas for using CSI if you're looking for a job, or think you might need to start looking in the next few months. CSI members with other ideas are urged to post them in CSI's forums. Conducting a job hunt?

1. **Visit CSI's Career Center.** You can post a resume and read job postings from across the country for free. Visit the Career Center.
2. **Join a CSI chapter and go to the meetings.** Your local CSI chapter is plugged in to construction in your area. Spend time with people who know which firms are hiring, and who could recommend you. Find a chapter.

Improve your resume:

1. **Get your CDT, or advanced certification.** Show potential employers that you are an expert. CSI chapters offer preparation courses and mentoring for exam candidates – another opportunity for you to expand your network. Learn more about CSI Certification. The early registration deadline for the fall exam cycle is July 26, 2011.
2. **Write a technical article for Construction Specifier magazine.** Contact the Specifier with your article idea at editor@constructionspecifier.com.
3. **Be a speaker for a CSI Webinar.** To submit a presentation complete this form and then email it to jnorris@csinet.org.
4. **Participate in CSI.** Potential employers are likely to Google your name while considering you. Give them something worth finding:
 - Expert responses to questions in CSI's forums. (Log in before you post a response to have your name appear with your response.)
 - Your membership in a CSI committee or task team at the national, region or chapter level. (See a list of national committees and task teams.)
 - Join CSI's LinkedIn group. (Create a free profile on LinkedIn, then search for "CSI" under groups.)
5. **Tweet what you know!** Create a free profile at www.twitter.com and start sharing what you know about construction and CSI. Then let CSI know by sending a tweet to [CSIConstruction](https://twitter.com/CSIConstruction). CSI follows and promotes CSI chapters and members that tweet.

Your CSI membership can be a valuable tool in your job hunt! Good luck!

CDT Training Classes

By Holly Jordan, CSI, CCS, CCCA, LEED AP

The Construction Documents Technology (CDT) classes will be held at Wallcoverings International (1012 Campbell Rd) Wednesday evenings from August 3rd through September 22nd (one Thursday) (6-8 PM).

Classes will be \$75.00 for CSI members and \$100.00 for members to cover materials and incidentals. RSVP to Holly Jordan at hjordan@jordanconsultants.com or (713) 366-0320 if you would like to attend or if you have any questions.

The Construction Documents Technology (CDT) Program provides a comprehensive overview for anyone who writes, interprets, enforces, or manages construction documents. Project architects, contractors, contract administrators, material suppliers, and manufacturers' representatives are all realizing the advantages of being Construction Documents Technologists.

The objective of the CDT Program is to improve construction documentation and to accomplish the following:

1. Allow individuals to demonstrate through examination their knowledge of CSI's recommended practices in:
 - a. Construction process
 - b. Contractual relationships
 - c. Relationship and organization of construction documents
2. Encourage individuals to become familiar with the fundamental principles of specification writing and construction document organization as recommended by CSI.

This is a great opportunity to absorb the necessary background and information to pass the CDT exam given by CSI. It also dovetails nicely with the CD portion of the ARE exam subject matter. In addition, the following was taken from the NCARB ARE e-News (<http://www.ncarb.org/idp/enews/2009/may/index.html>):

Interns in the NCARB IDP must acquire 700 training units to satisfy the IDP Training Requirement.

One training unit equals eight hours of acceptable training in an acceptable work setting.

- **CSI Construction Documents Technologist (CDT) Certification**

Maximum Training Units Allowed: 5

A copy of your certificate must be submitted to NCARB to receive credit.

- **CSI Construction Specifier (CCS) Certification**

Training Category A - Specifications and Materials Research

Maximum Training Units Allowed: 5

A copy of your certificate must be submitted to NCARB to receive credit. (Note: this cannot be combined with EPC activities for satisfaction of minimum training units in this area.)

- **CSI Construction Contract Administrator (CCCA) Certification Training Category B - Construction Phase—Office**

Maximum Training Units Allowed: 5

A copy of your certificate must be submitted to NCARB to receive credit. (Note: this cannot be combined with EPC activities for satisfaction of minimum training units in this area.)

FEATURE YOUR PRODUCTS WITH A TABLE TOP DISPLAY

At each monthly meeting, the Chapter encourages Industry Members to provide a table top display of their products and services for the inspection and education of those attending the meeting.

The table top display is also encouraged to be presented during the social hour and after the program for any questions by attendees.

The presentation fee for this time is \$100 for members and \$150 for non-members.

Membership Chair Report

By Chuck Vojtech, CSI, CDT

Houston Chapter Statistics

Member Type:

Total: 156 (100%)

Industry: 26 (16.67%)

Intermediate: 11 (7.05%)

Professional: 110 (70.51%)

Professional Emeritus: 2 (1.28%)

Professional Lifetime: 1 (0.64%)

Professional Retired: 1 (0.64%)

Student: 5 (3.21%)

We would like to recognize our newest members who have joined in April 2011.

Kevin Gilbert – Tremco, Inc

We would also like to recognize members who have celebrated anniversaries with CSI in the month of May:

Robert Alford – 31 Years

Eric Banks – 1 Year

Heidi Bouley – 1 Year

Doug Frank – 33 Years

Peter Gross – 6 Years

Jim Hodges – 12 Years

James Krueger – 14 Years

John Loper – 5 Years

George Pontikes – 1 Year

Di Ann Reid – 13 Years

Harold Woolard – 21 Years

Everyone is encouraged to reach out to colleagues, coworkers, customers, vendors and students to join CSI and get involved.

Thank you for your participation in CSI Houston!

WHERE IS YOUR BUSINESS ADVERTISEMENT?

A quarter page ad is only \$250 for 12 issues

A half page ad is only \$500 for 12 issues

A business card ad is only \$225 for 12 issues

Contact Don Smith at

(713) 688-0092 or

don.smith315@sbdglobal.net

for more information.

CSI CONSTRUCTION 2011 & THE CSI NATIONAL CONVENTION, Sept 2011, Chicago, Illinois

By Dorothy Gumm Denison, CSI, CCS, Institute
Director from the South Central Region

Register now to attend CONSTRUCTION 2011 & THE CSI ANNUAL CONVENTION to be held in Chicago Sept. 2011.

For the first time, all 10 CSI regions accepted an invitation from the CSI Board and sent representatives to participate in Board training conducted at the Minneapolis board meeting, and to network with national leaders and one another. During a workshop of region leaders, they developed mission statements and value propositions for their individual regions, and discussed the role of regions in today's CSI. They will meet again at CSI convention.

From the CSI President Paul Bertram, the Institute mission this coming year will be focused on how CSI can increase and retain membership.



22nd Annual CSI Golf Tournament

Brian T. Harrington Golf Classic

TOURNAMENT SPONSORSHIP FORM (Due by September 30, 2011)

Oakhurst Golf Club, 20700 Mills Branch - Porter, TX 77365 – 281.354.4653
Monday, October 10, 2011 (Modified Shotgun Start 1:00 p.m.)

SPONSORSHIPS AVAILABLE:	Cost (Number Available)	Contribution
GOLD	\$2,000	\$ _____
SILVER	\$1,000	\$ _____
BRONZE	\$600	\$ _____
LUNCH BUFFET	\$750 (1)	\$ _____
AWARDS / BBQ DINNER	\$750 (1)	\$ _____
BEVERAGE CART	\$500 (2)	\$ _____
HOLE-IN-ONE CONTEST	\$400 (1)	\$ _____
RAFFLE PRIZE	\$400 (1)	\$ _____
HOLE	\$150	\$ _____
	Total Contribution	\$ _____

(please print)

NAME/TITLE _____
 COMPANY NAME _____
 MAILING ADDRESS _____
 CITY, STATE, ZIP _____
 PHONE & FAX _____
 EMAIL ADDRESS _____

[] Please include my company's promotional items in each player's "gift bag."^(*)

Make checks payable to "CSI - Houston" and send to:

*Robert Cook
 19027 Ridge Hill Court
 Houston, Texas 77084*

() Promotional items are to be delivered by September 30th to Holly Jordan c/o Jordan Consultants, 50 Briar Hollow Lane, Suite 235W
 Houston, Texas 77027, (713) 366-0320.*

The sponsorship forms must be received at CSI by September 30th.

Note: All sponsors who qualify will receive a free tabletop presentation at monthly CSI Chapter Meetings.

“Strictly SMITH-ly”

by Donald F. Smith, Jr., CSI CCS AIA LEED AP

What Does It Take to Build a Building?

Remembering that Drawings show the scope of what is involved in the completed Work, where work is located, arrangement, size, relationships, and quantity required; while specifications give the performance, appearance, quality, function and source requirements for materials, products, and equipment and procedures required to achieve a specific result. It also helps to remember that the Drawings and Project Manual only describe the work as contemplated at completion. They are not a recipe to achieve the end result.

A colleague contacted me the other day to discuss the topic of semi-automated specification masters replacing the specification writer.

The more critical questions that were unasked are “Who is the Architect going to pick to make the 400,000 or so decisions that go into a Project Manual?” Think of the rapidly changing construction and regulatory environment that surrounds every project. “Does your semi-automated master respond to local laws, ordinances, construction practices, material and product availability?” Whoever edits the semi-automated specifications will need to make these decisions based upon the latest laws, ordinances, and construction practices that bear on the project. “Who writes and coordinates the invitation to bid, instructions to bidders, bid forms, bond forms, and conditions of the contract?” Some of these documents contain subjects that are business decisions, legal decisions, and all will most likely bear on the cost of the work and are beyond the scope of the Architects practice. Also, “How will the Architect make a reasonable effort to achieve value for his client?”

Of course everyone on an Architects staff is fluent in all these areas of architectural practice including the coordination of closely related work and requirements of the bidding documents, contract for construction, and the conditions of the contract that effect the Architects administration of the contract for construction.

The architectural profession has rapidly grown to the point that the Project Manual needs to be written and coordinated by someone with both a detailed and broad current knowledge of the practice of Architecture and related engineering

disciplines. Who on and Architects team has the knowledge, skill, and experience to carry out the decisions that relate to the project requirements?

Everything that the Architect does not define to be performed by engineering consultants, remains with the Architect to perform. And of course, the Architect is responsible to his client and the public for all of the work of the project team for each project that he performs.

How can a semi-automated specification master address all of these decisions and duties? Who will be qualified to push the buttons? A person that only performs this task every six months to several years apart? Or, a person who by training and exposed by experience to make these decisions every day and who knows when to ask for additional information? Most of these semi-automated specification masters are programed to edit specifications based upon answers that the specification editor gives to a select list of questions posed in the master. Suppose the master doesn't ask all the right questions for your particular project. It is a lot harder to concentrate on missing information when you are concentrating on a question of what to do.

Now consider cutting up these 400,000 decisions and placing some of the information in BIM property notes and some in the Project Manual. How do you comply with the CSI rule of saying it once and saying it in the best place and still create a clear understandable set of requirements.

You can easily see the need of an expert with a cast iron stomach!

"Good judgment comes from experience, and experience comes from bad judgment."

Barry LePatner, Esq.

... Just My Opinion

Donald F. Smith, Jr., CSI, CCS, RA, LEED™ AP



SPEC.TECTONICS is a monthly publication of the Houston Chapter, Construction Specifications Institute. CSI HOUSTON does not approve, disapprove, sanction, or guarantee the validity or accuracy of any date, claim, or opinion appearing herein. Republication rights are granted to the CSI and its chapters for original articles printed herein, provided proper credits are given. The Houston Chapter is incorporated under the laws of the State of Texas, and is chartered by the Construction Specifications Institute.

CSI Houston

Construction Specifications Institute
 P.O. Box 79285
 Houston, TX 77279-9285
 (713) 627-2283, Ext. 319

www.csihouston.org

Visit CSI Houston
 on the Web

www.csihouston.org

September Through October 2011

Sun	Mon	Tue	Wed	Thu	Fri	Sat
AUG 28	29	30	31	SEPT 1	2	3
4	5	6	7	8	9	10
11	12	13 CSI Planning Meeting—Hin's Garden	14	15	16	17
18	19	20	21	22	23	24
25	26 CSI Houston Board / Chapter Meeting	27	28	29	30	OCT 1
2	3	4	5	6	7	8
9	10	11 CSI Planning Meeting—Hin's Garden	12	13	14	15
16	17	18	19	20	21	22
23/30	24/31 CSI Houston Board / Chapter Meeting	25	26	27	28	29