

# SPEE.tectonics

*The art of creating things that have both beauty and use-*



Knowledge for Creating  
and Sustaining  
the Built Environment

July 2011

## JULY 25TH MEETING

### PROGRAM:\

#### PLACE:

H.E.S.S. Building  
5430 Westheimer

#### TIME:

5:30 P.M. (Registration and  
mixer)

6:00 P.M. (Evening Meal  
and Meeting)

#### DATE:

MONDAY,  
JULY 25, 2011

#### COST:

\$30.00 Per Person; Free to  
CSI members.

#### RESERVATIONS:

Please e-mail:  
csi-houston@gmail.com

## ***Inside this issue:***

<i>President's Message</i>	3
<i>Construct 2011 Education Program Topics</i>	3
<i>CSI Sponsor Advertisements</i>	4, 5
<i>Houston CIC Report</i>	5
<i>Houston Chapter Awards</i>	6,7
<i>Using CSI National to Find Your Next Job</i>	7
<i>CDT Training</i>	8
<i>Membership Report</i>	9
<i>Golf Sponsorship Form</i>	10
<i>Strictly Smith-ly</i>	11
<i>Calendar</i>	12

CSI Houston Website:  
<http://www.csi-houston.org>

## July CSI Houston Chapter Program

### Geothermal/Geoexchange in the Greater Houston Area

Presented by

**Russell V. Buras, President  
LoopTech**

Presenter for the July CSI Houston Chapter program will be Russell Buras of LoopTech, Huntsville, TX ( <http://www.looptech.com> ). His presentation is entitled "Geothermal/Geoexchange in the Greater Houston Area. Presentation learning goals will include:

- **Explain what a Closed Loop Geothermal system is.**
- **Evaluate what type of building projects would be a good candidate for these types of systems.**
- **Compare and contrast some of the pros and cons of a Geothermal system with traditional models.**
- **Compile the basic components of a Geothermal system.**

The presentation will also focus on the projects around the Greater Houston Area and will keep the presentation informative, practical, and up-beat. Please bring your questions.

## Coming in August . . .

The presenter for the August 22nd CSI Houston Chapter program will be Bill Lunsford with Mortar Net. His presentation is entitled "Moisture Prevention in Masonry Construction" .

## CSI HOUSTON CHAPTER

### 2010—2011 CHAPTER OFFICERS

President	Robert M. Cook, CSI, AHC (832) 496-9507 rcook@stanleyworks.com
President Elect	James Sandoz, CSI, CCS AIA LEED AP jsandoz@fcp.com (713) 821-9266; cell (832) 405-8541
Past President	Thomas Atwell, CSI, CDT, AIA (713) 783-6768 tat10706@aol.com
VP Member Services	Neil Byrne, CSI, CPA NPByrne@byrmetals.com cell (832) 233-4619
VP Public Services	Lisa Murray, CSI, CCS, LEED AP (713) 294-7387 lisa@mosaicdesignspec.com
VP Professional Development	Mark Koehler, CSI (713) 302-6636 mkoehler@siplast.com
VP Finance/ Admin.	Don Smith, CSI, CCS, AIA, LEED AP (713) 688-0092 don.smith315@sbcglobal.net
Secretary	Betsy Finch, CSI (713) 806-3401 betsy.finch13@gmail.com
Treasurer	Chuck Vojtech, CSI (281) 227-3577 chuck@rpcinc.com

### 2010—2011 BOARD OF DIRECTORS

Director through 2013	
Director through 2013	Holly Jordan, CSI, CCS, LEED AP, SCIP (713) 366-0320 hjordan@jordanconsultants.com
Director through 2012	Di Ann Reid, CSI, CCS, CCA, LEED AP (713) 844-0091 diann_reid@gensler.com
Director through 2012	Doug Frank, FCSI, CCS (713) 621 2100 dfrank@fcp.com
Director through 2011	Bill Fairbanks, CSI, CCPR (281) 227-3577 fairbanks@rpcinc.com
Director through 2011	
Director, Emeritus	Larry Adams, CSI, DAHC (281) 448-7279

### 2010—2011 CSI HOUSTON SPEC.TECTONICS

SPEC.tectonics Editor	Don Smith, CSI, CCS, AIA, LEED AP (713) 688-0092 don.smith315@sbcglobal.net
-----------------------	---

### 2010—2011 COMMITTEE CHAIRS

Program	Janet Babineaux, CSI (281) 221-8353 JBabineaux@brick.com
Membership	Amanda Carrington, CSI (832) 405-7166 acarrington@archmetalroof.com
Certification	Holly Jordan, CSI, CCS, LEED AP, SCIP (713) 366-0320 hjordan@jordanconsultants.com
Technical	J. Peter Jordan, FCSI, CCS, LEED AP, SCIP AIA (713) 366-0320 jpjordan@jordanconsultants.com
Awards	Amy Salmeron, CSI, CDT (713) 965-0608 amy.salmeron@pbk.com
Scholarship	Frank Bain, CSI (713) 827-8844 fbain@wallcoveringsintl.com
Continuing Education	Mark Koehler, CSI (713) 302-6636 mkoehler@siplast.com
Academic Affairs	
Public Relations	Logan Vits, CSI, CCPR, LEED GA (713) 781-3287 tanner@griesenbeck.com
Product Show (CTE)	Di Ann Reid, CSI, CCS, CCA, LEED AP (713) 844-0091 diann_reid@gensler.com
Golf Tournament	Holly Jordan, CSI, CCS, LEED AP, SCIP (713) 366-0320 hjordan@jordanconsultants.com
Table Top	Holly Jordan, CSI, CCS, LEED AP, SCIP (713) 366-0320 hjordan@jordanconsultants.com
CIC Delegate	Di Ann Reid, CSI, CCS, CCA, LEED AP (713) 844-0091 diann_reid@gensler.com

### 2010—2011 CSI HOUSTON WEBSITE

Webmaster	Lisa Murray, CSI, CCS, LEED AP (713) 844-0091 lisa@mosaicdesignspec.com
-----------	---

### 2010—2011 CSI FOUNDATION

President	Frank Bain, CSI (713) 827-8844 fbain@wallcoveringsintl.com
Vice President	Robert M. Cook, CSI, AHC
Secretary	Dorothy Gumm Denison, CSI, CCS
Treasurer	Brett Wilbur, CSI, CCS, RA
At Large Position 1	Harold W. Woolard, FCSI
At Large Position 2	Greg L. Roberts, FCSI, CCS, CCA, FAIA
At Large Position 3	

### CSI SOUTH CENTRAL REGION

President	Kathlene Liles, CSI, CDT (713) 854-6783 kannliles@aol.com	Director,	Dorothy Gumm Denison, CSI, CCS (713) 962-4209 dotgumm@sbcglobal.net
-----------	---	-----------	---

# July 2011

## President's Message

by Robert M. Cook, CSI, AHC

I am excited and humbled at being elected to represent you and our Houston CSI chapter for this year! We have some challenges ahead of us this year.



- My first goal is raising money to continue our Scholarship distributions and fund our chapter for 2011-2012. We need everyone's help in filling up our Golf Tournament Sponsorships. Especially now and specifically because times are tough we need everyone to step up to the plate and help. This is our Main Fund raiser for the year. **This event funds our chapter expenses, pays for our meeting meals, and funds student scholarship awards for each year.** With all of you helping we can make this year's tournament as big of a success as last year's was. Contact Holly Jordan or me for your opportunity to help.
- Second, is re-establishing Houston CSI as a Tax Exempt organization. We lost our Tax Exempt status. It was revoked with the IRS in March 2007 for non-filing. The Board has a good understanding of what is required to re-establish our standing, and we are working to resolve this issue as quickly as possible.
- Third, I would like to ask each chapter member, especially our architects, to bring someone to our next meeting. Our membership has been declining and we need to involve more of the younger professionals in our chapter to ensure its future stability and growth.

I want to personally thank Tom Atwell for his hard work, friendship, and exceptional example this past year. I have big shoes to fill. I'll do my best to fill them and keep our organization moving forward.

Thanks again for your confidence.

## CSI CONSTRUCT 2011 IS CALLING FOR EDUCATION PROGRAM TOPICS

By Dorothy Gumm Dennison, CSI, CCS  
CSI Institute Director for South Central Region

**Education - September 13-16, 2011**  
**Exhibits - September 14-16, 2011**  
**McCormick Place, Chicago, IL**  
<http://www.constructshow.com>

CSI CONSTRUCT 2011 (CSI NATIONAL CONVENTION) is now accepting submissions for the 2011 education program topics.

CSI CONSTRUCT 2011 is committed to promoting a comprehensive education program for construction and design professionals, including the people they serve, the environment, emerging technology and the economic impact to businesses.

CSI CONSTRUCT 2011 provides an excellent opportunity and venue to showcase the latest **industry updates** and **case studies** for the commercial building and construction market.

For additional information and to submit your propose topic(s) . You can access the information by clicking or copying this link into your browser: <http://www.zoomerang.com/Survey/WEB22AR7QC7G3N>

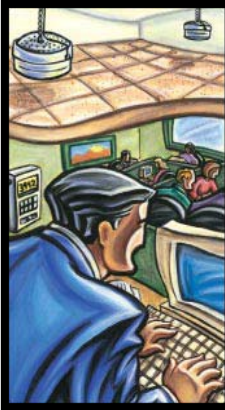
Questions? Contact Carol Wilkins, Sr. Conference Manager, CONSTRUCT2011 at **972-536-6358** or [cwilkins@hanleywood.com](mailto:cwilkins@hanleywood.com).

## CSI National Recruitment Drive

By CSI National

CSI is bringing back the popular [50-50 Recruitment Program](#). In this program, CSI's chapters and the national office coordinate to offer a discount on dues for new members who participate in a local education program.

A revised Member-Sponsor-a-Member campaign will be introduced at [CONSTRUCT2011 & The CSI Annual Convention](#) in September. It will feature communication and marketing tools to facilitate peer-to-peer recruitment.



**Kathleen Liles, CSI, CDT**

7925 County Road 684  
Sweeny, TX 77480

Tel (713) 854-6783  
Toll Free (877) 854-6783  
Fax (979) 345-2099  
Email [kliles@archoustics-south.com](mailto:kliles@archoustics-south.com)  
Web [www.archoustics-south.com](http://www.archoustics-south.com)

## FEATURE YOUR PRODUCTS WITH A TABLE TOP DISPLAY

At each monthly meeting, the Chapter encourages Industry Members to provide a table top display of their products and services for the inspection and education of those attending the meeting.

The table top display is also encouraged to be presented during the social hour and after the program for any questions by attendees.

The presentation fee for this time is \$100 for members and \$150 for non-members, or free with a Golf Sponsorship pledge. See page 10 for details.

## Houston CIC Report

By Di Ann Hassloch, CSI ,CCS, CCCA, LEED AP

**New Construction Codes—Effective 12/31/2010.** On November 3rd, City Council approved the 2006 Code Package to adopt updated Construction Codes. The 2006 International Building Code is the basis for the revised code. The new amendments are available at [http://documents.publicworks.houstontx.gov/documents/divisions/planning/enforcement/06\\_ibc\\_amendments.pdf](http://documents.publicworks.houstontx.gov/documents/divisions/planning/enforcement/06_ibc_amendments.pdf) They are not currently available for purchase.

**Texas Adopts New Energy Code 2009 IECC effective April 1st, 2011.** The major points to be guided by for the building envelope are:

- All commercial projects will need insulated glass. No more monolithic exceptions for small window to wall ratios.
- All commercial projects will need to exhibit an SHGC (Solar Heat Gain Coefficient) of .25 or less. This is a major revision and improvement to save energy for our building owners. There are exceptions for projection factors i.e. shading.

As published in the Texas Register today: ADOPTED RULES June 4, 2010 35 TexReg 4727

### Current codes in the City of Houston include:

- **Building Code:** 2006 IBC with Houston Amendments.
- **Residential Code:** 2006 IRC with Houston Amendments.
- **Electrical Code:** 2008 NEC with Houston Amendments—3rd Printing.
- **Mechanical Code:** 2006 UMC with Houston Amendments.
- **Plumbing Code:** 2006 UPC with Houston Amendments.
- **Fire Code:** 2006 International Fire Code

Please be advised that the new Commercial Energy Codes have been delayed; a new effective date will be announced.






- Solarban<sup>®</sup> Solar Control Low-E Glasses
- Oceans of Color<sup>®</sup> Spectrally Selective Tinted Glasses
- DURANAR<sup>®</sup> SPF ENERGY STAR-compliant high-performance coatings
- CORAFLO<sup>®</sup> ADS colorful, field-applied fluoropolymer coatings
- CORAFLO<sup>®</sup> and ENVIROCRON<sup>®</sup> Zero-VOC powder coatings
- Pure Performance<sup>®</sup> Zero-VOC paint from Pittsburgh<sup>®</sup> Paints
- Megaseal<sup>®</sup> Hygienic Industrial and Commercial Flooring Systems



To find out more information about PPG Architectural Glass, Coatings and Paint, go to: [www.ppgideascpes.com](http://www.ppgideascpes.com)

Contact:  Carl Metzroth, CSI, at 281-610-4854, or e-mail: Metzroth@ppg.com  
Deron Patterson, CSI, at 281-841-0829, or e-mail: Patterson@ppg.com

*The only Cradle to Cradle Certified<sup>CM</sup> Architectural Glass*

### WHERE IS YOUR BUSINESS ADVERTISEMENT?

- A quarter page ad is only \$250 for 12 issues
- A half page ad is only \$500 for 12 issues
- A business card ad is only \$225 for 12 issues

Contact Don Smith at  
(713) 688-0092 or  
[don.smith315@sbdglobal.net](mailto:don.smith315@sbdglobal.net)  
for more information.

## CSI 2011 HOUSTON CHAPTER AWARDS

By Amy Salmeron

**Chapter Certificate of Appreciation:** Awarded to individuals who have rendered distinguished service to the Chapter by advancing the objectives of the Institute or the Chapter.

Jerry L. Abendroth, CSI, CDT  
Webmaster  
Building Exterior Solutions, LLC

Frank Bain, CSI  
President, CSI Foundation  
Wallcoverings International

Robert M. Cook, CSI, AHC  
President Elect  
Stanley Security Solutions

Don Ude, CSI  
Past President  
Arrowall

James Sandoz, CSI, CCS, AIA, LEED-AP  
Vice-President Member Services  
FKP Architects

Mark Joseph Koehler, CSI  
Vice-President Professional Development  
Siplast

Lisa Murray, CSI, CCS, LEED AP  
Vice-President, Public Services  
Mosaic Design & Specifications, LLC

Don Smith, CSI, CCS, AIA, LEED AP  
Vice-President, Finance/Administration

Betsy Finch, CSI  
Secretary  
Betsy Finch & Associates

Robert M. Cook, CSI, AHC  
Treasurer  
Stanley Security Solutions

Di Ann Reid, CSI, CCS, CCCA, LEED-AP  
Director  
Gensler

Doug Frank FCSI, CCS  
Director  
FKP Architects

Bill Fairbanks, CSI, CCPR  
Director  
RPC, Inc.

Lance McHaney, CSI  
Director  
Lance McHaney & Associates

Holly Jordan, CSI, CCS, LEED AP, SCIP  
Director  
Jordan Consultants

Lawrence K. Adams, CSI, DAHC  
Director Emeritus  
Retired

J. Peter Jordan, CSI, CCS, LEED AP, SCIP, AIA  
Technical  
Jordan Consultants

Janet Babineaux, CSI  
Program Chairman  
American Tile

Chuck Vojtech, CSI, CDT, CCPR  
Membership Chairman  
RPC Incorporated

Holly Jordan, CSI, CCS, LEED AP, SCIP  
Certification Chairman  
Jordan Consultants

Amy Salmeron, CSI, CDT  
Awards Chairman  
PBK Architects

Frank Bain, CSI  
Scholarship Chairman  
Wallcoverings International

Mark Joseph Koehler, CSI  
Continuing Education Chairman  
Siplast, Inc.

Mollie Striednig, CSI  
Academic Affairs Chairman  
Headwaters

Di Ann Reid, CSI, CCS, CCCA, LEED-AP  
Product Show Chairman  
Gensler

Holly Jordan, CSI, CCS, LEED AP, SCIP  
Golf Tournament Chairman  
Jordan Consultants

Holly Jordan, CSI, CCS, LEED AP, SCIP  
Table Top Chairman  
Jordan Consultants

Di Ann Reid, CSI, CCS, CCCA, LEED-AP  
CIC Delegate  
Gensler

Donald F. Smith, Jr. CSI, CCS, AIA, LEED-AP  
SPEC.tectonics Editor

Tanner Spears, CSI  
Public Relations  
Griesenbeck

J. Peter Jordan, CSI, CCS, LEED AP, SCIP, AIA  
Technical  
Jordan Consultants

### **Chapter Education Award**

J. Peter Jordan, CSI, CCS, LEED-AP, SCIP, AIA  
CDT Instructor  
Jordan Consultants, LLC

Holly Jordan, CSI, CCS  
CDT Instructor  
Jordan Consultants

Christopher Quinten, CSI-I, CDT  
CDT Instructor  
Jordan Consultants

## CSI 2011 HOUSTON CHAPTER AWARDS (continued)

### **Chapter Organizational Certificates of Appreciation:**

Awarded to a firm or organization for distinguished accomplishments, which promote the objectives of the Institute or Chapter.

Lance McHaney & Associates

In recognition of their financial support to the CSI Chapter

Wallcoverings International

In recognition of their support to the CSI Chapter hosting the CDT classes

A&E The Graphics Complex

In recognition of their support to the CSI Chapter furnishing the Chapter printing needs

Craftsman Fabricated Glass

In recognition of their support to the CSI Chapter providing the March 2010 tour.

**Presidential Citation Certificate:** Awarded by the Chapter President, at the discretion of the President, for exceptional work performed on behalf of the Chapter.

Robert M. Cook, CSI, AHC

Stanley Security Solutions

For his outstanding work in revitalizing the CSI Foundation and bringing about the presentation of scholarships.

### **Chapter MVP Award:**

Lisa Murray, CSI, CCS, LEED AP

Mosaic Design & Specifications, LLC

### **Hall of Fame:**

Frank Bain, CSI

Wallcoverings International

### **President's Gavel:**

Wood gavel for President elect and plaque for gavel for outgoing President

Also President's CSI pin with gavel connected to it by chain.

## Using CSI National to Find Your Next Job

Here are some ideas for using CSI if you're looking for a job, or think you might need to start looking in the next few months. CSI members with other ideas are urged to post them in CSI's forums.

Conducting a job hunt?

1. **Visit CSI's Career Center.** You can post a resume and read job postings from across the country for free. Visit the Career Center.
2. **Join a CSI chapter and go to the meetings.** Your local CSI chapter is plugged in to construction in your area. Spend time with people who know which firms are hiring, and who could recommend you. Find a chapter.

Improve your resume:

1. **Get your CDT, or advanced certification.** Show potential employers that you are an expert. CSI chapters offer preparation courses and mentoring for exam candidates – another opportunity for you to expand your network. Learn more about CSI Certification. The early registration deadline for the fall exam cycle is July 26, 2011.
2. **Write a technical article for Construction Specifier magazine.** Contact the Specifier with your article idea at editor@constructionspecifier.com.
3. **Be a speaker for a CSI Webinar.** To submit a presentation complete this form and then email it to jnorris@csinet.org.
4. **Participate in CSI.** Potential employers are likely to Google your name while considering you. Give them something worth finding:
  - Expert responses to questions in CSI's forums. (Log in before you post a response to have your name appear with your response.)
  - Your membership in a CSI committee or task team at the national, region or chapter level. (See a list of national committees and task teams.)
  - Join CSI's LinkedIn group. (Create a free profile on LinkedIn, then search for "CSI" under groups.)
5. **Tweet what you know!** Create a free profile at www.twitter.com and start sharing what you know about construction and CSI. Then let CSI know by sending a tweet to CSIConstruction. CSI follows and promotes CSI chapters and members that tweet.

Your CSI membership can be a valuable tool in your job hunt! Good luck!

## CDT Training Classes

By Holly Jordan, CSI, CCS, CCCA, LEED AP

The Construction Documents Technology (CDT) classes will be held at Wallcoverings International (1012 Campbell Rd) Wednesday evenings from August 3rd through September 22nd (one Thursday) (6-8 PM).

Classes will be \$75.00 for CSI members and \$100.00 for members to cover materials and incidentals. RSVP to Holly Jordan at [hjordan@jordanconsultants.com](mailto:hjordan@jordanconsultants.com) or (713) 366-0320 if you would like to attend or if you have any questions.

**The Construction Documents Technology (CDT) Program** provides a comprehensive overview for anyone who writes, interprets, enforces, or manages construction documents. Project architects, contractors, contract administrators, material suppliers, and manufacturers' representatives are all realizing the advantages of being Construction Documents Technologists.

The objective of the CDT Program is to improve construction documentation and to accomplish the following:

1. Allow individuals to demonstrate through examination their knowledge of CSI's recommended practices in:
  - a. Construction process
  - b. Contractual relationships
  - c. Relationship and organization of construction documents
2. Encourage individuals to become familiar with the fundamental principles of specification writing and construction document organization as recommended by CSI.

This is a great opportunity to absorb the necessary background and information to pass the CDT exam given by CSI. It also dovetails nicely with the CD portion of the ARE exam subject matter. In addition, the following was taken from the NCARB ARE e-News (<http://www.ncarb.org/idp/enews/2009/may/index.html>):

**Interns in the NCARB IDP must acquire 700 training units to satisfy the IDP Training Requirement.**

**One training unit equals eight hours of acceptable training in an acceptable work setting.**

- **CSI Construction Documents Technologist (CDT) Certification**

Maximum Training Units Allowed: 5

A copy of your certificate must be submitted to NCARB to receive credit.

- **CSI Construction Specifier (CCS) Certification**  
Training Category A - Specifications and Materials Research

Maximum Training Units Allowed: 5

A copy of your certificate must be submitted to NCARB to receive credit. (Note: this cannot be combined with EPC activities for satisfaction of minimum training units in this area.)

- **CSI Construction Contract Administrator (CCCA) Certification**  
Training Category B - Construction Phase—Office

Maximum Training Units Allowed: 5

A copy of your certificate must be submitted to NCARB to receive credit. (Note: this cannot be combined with EPC activities for satisfaction of minimum training units in this area.)

### FEATURE YOUR PRODUCTS WITH A TABLE TOP DISPLAY

At each monthly meeting, the Chapter encourages Industry Members to provide a table top display of their products and services for the inspection and education of those attending the meeting.

The table top display is also encouraged to be presented during the social hour and after the program for any questions by attendees.

The presentation fee for this time is \$100 for members and \$150 for non-members.



## Membership Chair Report

By Chuck Vojtech, CSI, CDT

Houston Chapter Statistics

**Member Type:**

**Total:** 156 (100%)

**Industry:** 26 (16.67)

**Intermediate:** 11 (7.05%)

**Professional:** 110 (70.51%)

**Professional Emeritus:** 2 (1.28%)

**Professional Lifetime:** 1 (0.64%)

**Professional Retired:** 1 (0.64%)

**Student:** 5 (3.21%)

We would like to recognize our newest members who have joined in April 2011.

Kevin Gilbert – Tremco, Inc

We would also like to recognize members who have celebrated anniversaries with CSI in the month of May:

Robert Alford – 31 Years

Eric Banks – 1 Year

Heidi Bouley – 1 Year

Doug Frank – 33 Years

Peter Gross – 6 Years

Jim Hodges – 12 Years

James Krueger – 14 Years

John Loper – 5 Years

George Pontikes – 1 Year

Di Ann Reid – 13 Years

Harold Woolard – 21 Years

Everyone is encouraged to reach out to colleagues, coworkers, customers, vendors and students to join CSI and get involved.

Thank you for your participation in CSI Houston!

*CSI Board / Planning Meeting—Buffalo WW*

### WHERE IS YOUR BUSINESS ADVERTISEMENT?

A quarter page ad is only \$250 for 12 issues

A half page ad is only \$500 for 12 issues

A business card ad is only \$225 for 12 issues

Contact Don Smith at

(713) 688-0092 or

[don.smith315@sbdglobal.net](mailto:don.smith315@sbdglobal.net)

for more information.

## CSI CONSTRUCTION 2011 & THE CSI NATIONAL CONVENTION, Sept 2011, Chicago, Illinois

By Dorothy Gumm Denison, CSI, CCS, Institute  
Director from the South Central Region

Register now to attend CONSTRUCTION 2011 & THE CSI ANNUAL CONVENTION to be held in Chicago Sept. 2011.

For the first time, all 10 CSI regions accepted an invitation from the CSI Board and sent representatives to participate in Board training conducted at the Minneapolis board meeting, and to network with national leaders and one another. During a workshop of region leaders, they developed mission statements and value propositions for their individual regions, and discussed the role of regions in today's CSI. They will meet again at CSI convention.

From the CSI President Paul Bertram, the Institute mission this coming year will be focused on how CSI can increase and retain membership.



# 22nd Annual CSI Golf Tournament

## Brian T. Harrington Golf Classic

### TOURNAMENT SPONSORSHIP FORM (Due by September 30, 2011)

*Oakhurst Golf Club, 20700 Mills Branch - Porter, TX 77365 – 281.354.4653*  
Monday, October 10, 2011 (Modified Shotgun Start 1:00 p.m.)

SPONSORSHIPS AVAILABLE:	Cost (Number Available)	Contribution
GOLD	\$2,000	\$ _____
SILVER	\$1,000	\$ _____
BRONZE	\$600	\$ _____
LUNCH BUFFET	\$750 (1)	\$ _____
AWARDS / BBQ DINNER	\$750 (1)	\$ _____
BEVERAGE CART	\$500 (2)	\$ _____
HOLE-IN-ONE CONTEST	\$400 (1)	\$ _____
RAFFLE PRIZE	\$400 (1)	\$ _____
HOLE	\$150	\$ _____
	Total Contribution	\$ _____

(please print)

NAME/TITLE \_\_\_\_\_  
 COMPANY NAME \_\_\_\_\_  
 MAILING ADDRESS \_\_\_\_\_  
 CITY, STATE, ZIP \_\_\_\_\_  
 PHONE & FAX \_\_\_\_\_  
 EMAIL ADDRESS \_\_\_\_\_

**[ ] Please include my company's promotional items in each player's "gift bag."**<sup>(\*)</sup>

*Make checks payable to "CSI - Houston" and send to:*

*Robert Cook  
 19027 Ridge Hill Court  
 Houston, Texas 77084*

*(\*) Promotional items are to be delivered by September 30th to Holly Jordan c/o Jordan Consultants, 50 Briar Hollow Lane, Suite 235W  
 Houston, Texas 77027, (713) 366-0320.*

The sponsorship forms must be received at CSI by September 30th.

Note: All sponsors who qualify will receive a free tabletop presentation at monthly CSI Chapter Meetings.

## “Strictly SMITH-ly”

by Donald F. Smith, Jr., CSI CCS AIA LEED AP

### With a Little Help From My Friends . . .

In addition to CSI networking, the CSI National Career Center, and mingling at CSI Chapter meeting, another good source of contacts is professional association and organization directories. Take a good look at those initials following the names on the business cards that you collect from those you call on. The association and organizations that your contacts belong to can be a gold mine of construction industry information on individuals and professional society news.

Organizations such as the American Institute of Architects (<http://www.aia.org>), the Texas Society of Architects (<http://www.texasarchitect.org>), American General Contractors Association (<http://www.agchouston.org>), Texas Society of Professional Engineers (<http://www.tspe.org>), American Society of Interior Designers (<http://www.asid.org>) and other professional organizations provide yearly directories with contact information for individuals and firms practicing in the Houston metropolitan area .

Whether you are searching for employment opportunities, following up on project leads, or looking for sales opportunities, these professional directories can help you achieve your goals.

... Just My Opinion

**Donald F. Smith, Jr., CSI, CCS, RA, LEED™ AP**  
[don.smith315@sbcglobal.net](mailto:don.smith315@sbcglobal.net)



SPEC.TECTONICS is a monthly publication of the Houston Chapter, Construction Specifications Institute. CSI HOUSTON does not approve, disapprove, sanction, or guarantee the validity or accuracy of any date, claim, or opinion appearing herein. Republication rights are granted to the CSI and its chapters for original articles printed herein, provided proper credits are given. The Houston Chapter is incorporated under the laws of the State of Texas, and is chartered by the Construction Specifications Institute.

## CSI Houston

Construction Specifications Institute  
 P.O. Box 79285  
 Houston, TX 77279-9285  
 (713) 627-2283, Ext. 319

[www.csihouston.org](http://www.csihouston.org)

Visit CSI Houston  
 on the Web

[www.csihouston.org](http://www.csihouston.org)

## July Through July 2011

Sun	Mon	Tue	Wed	Thu	Fri	Sat
JUNE 26	27	28	29	30	JUL 1	2
3	4	5	6	7	8	9
10	11	12 CSI Board / Planning Mtg— Hin's Dynasty	13	14	15	16
17	18	19	20	21	22	23
24	25 CSI Houston Board / Chapter Meeting	26	27	28	29	30
31	AUG 1	2	3	4	5	6
7	8	9 CSI Board / Planning Mtg— Hin's Dynasty	10	11	12	13
14	15	16	17	18	19	20
21/28	22 CSI Houston Board / Chapter Meeting	22/30	24/31	SEPT 1	2	3