

# SPEE.tectonics

*The art of creating things that have both beauty and usefulness*



Knowledge for Creating and  
Sustaining the Built Environment

**August 2011**

## **AUGUST 22TH MEETING**

### **PROGRAM:\**

#### **PLACE:**

H.E.S.S. Building  
5430 Westheimer

#### **TIME:**

5:30 P.M. (Registration and  
mixer)

6:00 P.M. (Evening Meal  
and Meeting)

#### **DATE:**

MONDAY,  
AUGUST 22, 2011

#### **COST:**

\$30.00 Per Person; Free to  
CSI members.

#### **RESERVATIONS:**

Please e-mail:  
csihouston@gmail.com

### ***Inside this issue:***

<i>CSI Chapter Program</i>	1
<i>President's Message</i>	3
<i>Construct 2011 Education Program Topics</i>	3
<i>Houston CIC Report</i>	4
<i>CSI Sponsor Advertisements</i>	5
<i>Board Meeting Minutes</i>	6
<i>Using CSI National to Find Your Next Job</i>	7
<i>CDT Training</i>	8
<i>Membership Chair Report</i>	9
<i>Golf Sponsorship Form</i>	10
<i>Strictly Smith-ly</i>	11
<i>Calendar</i>	12

CSI Houston Website:  
<http://www.csihouston.org>

## **August CSI Houston Chapter Program**

### **Moisture Prevention in Masonry Construction**

Presented by

**Bill Lundsford  
Mortar Net**

Presenter for the August 22nd CSI Houston Chapter program will be Bill Lundsford of Mortar Net ( [walundsford@att.net](mailto:walundsford@att.net) ). His presentation is entitled "Moisture Protection in Masonry Construction."

Presentation learning goals will include:

- **Moisture problems inherent with masonry construction**
- **Types of flashing.**
- **Mortar collection devices for cavity wall and single wythe construction.**
- **Weeps and vents.**
- **Moisture control for single wythe block applications**

Program attendees can receive 1 hour AIA/CES Health Safety and Welfare credit.

### **Coming in September . . .**

The presenter for the September 26th CSI Houston Chapter program will be Tom Ratway with Alpolc. His presentation is entitled "Design & Specification of ACM/MCM in Today's Architecture."

**CSI HOUSTON CHAPTER**  
**2010—2011 CHAPTER OFFICERS**

President Robert M. Cook, CSI, AHC  
(832) 496-9507  
Robert.Cook@sbdinc.com

President Elect James Sandoz, CSI, CCS AIA LEED AP  
jsandoz@fkp.com  
(713) 821-9266; cell (832) 405-8541

Past President Thomas Atwell, CSI, CDT, AIA  
(713) 783-6768  
tat10706@aol.com

VP Member Services Neil Byrne, CSI, CPA  
NPByrne@byrnetmetals.com  
cell (832) 233-4619

VP Public Services Lisa Murray, CSI, CCS, LEED AP  
(713) 294-7387  
lisa@mosaicdesignspec.com

VP Professional Development Mark Koehler, CSI  
(713) 302-6636  
mkoehler@siplast.com

VP Finance/ Admin. Don Smith, CSI, CCS, AIA, LEED AP  
(713) 688-0092  
don.smith315@sbcglobal.net

Secretary Betsy Finch, CSI  
(713) 806-3401  
betsy.finch13@gmail.com

Treasurer Chuck Vojtech, CSI  
(281) 227-3577  
chuck@rpcinc.com

**2010—2011 BOARD OF DIRECTORS**

Director through 2013 Amt Peevey, PE, RRO, CDT  
(713) 467-9840  
apeevey@besgrp.com

Director through 2013 Holly Jordan, CSI, CCS, LEED AP, SCIP  
(713) 366-0320  
hjordan@jordanconsultants.com

Director through 2012 Di Ann Reid, CSI, CCS, CCCA, LEED AP  
(713) 844-0091  
diann\_reid@gensler.com

Director through 2012 Doug Frank, FCSI, CCS  
(713) 621 2100  
dfrank@fkp.com

Director through 2011 Bill Fairbanks, CSI, CCPR  
(281) 227-3577  
fairbanks@rpcinc.com

Director through 2011

Director, Emeritus Larry Adams, CSI, DAHC  
(281) 448-7279

**2010—2011 CSI HOUSTON SPEC.TECTONICS**

SPEC.tectonics Editor Don Smith, CSI, CCS, AIA, LEED AP  
(713) 688-0092  
don.smith315@sbcglobal.net

**2010—2011 COMMITTEE CHAIRS**

Program Janet Babineaux, CSI  
(281) 221-8353  
JBabineaux@brick.com

Membership Amanda Carrington, CSI  
(832) 405-7166  
acarrington@archmetalroof.com

Certification Holly Jordan, CSI, CCS, LEED AP, SCIP  
(713) 366-0320  
hjordan@jordanconsultants.com

Technical J. Peter Jordan, FCSI, CCS, LEED AP, SCIP AIA  
(713) 366-0320  
jpjordan@jordanconsultants.com

Awards Amy Salmeron, CSI, CDT  
asaltx@gmail.com

Scholarship Frank Bain, CSI  
(713) 827-8844  
fbain@wallcoveringsintl.com

Continuing Education Mark Koehler, CSI  
(713) 302-6636  
mkoehler@siplast.com

Academic Affairs Logan Vits, CSI, CCPR, LEED GA  
(713) 703-5201  
lvits@assaabloydss.com

Public Relations Logan Vits, CSI, CCPR, LEED GA  
(713) 703-5201  
lvits@assaabloydss.com

Product Show (CTE) Di Ann Reid, CSI, CCS, CCCA, LEED AP  
(713) 844-0091  
diann\_reid@gensler.com

Golf Tournament Holly Jordan, CSI, CCS, LEED AP, SCIP  
(713) 366-0320  
hjordan@jordanconsultants.com

Table Top Holly Jordan, CSI, CCS, LEED AP, SCIP  
(713) 366-0320  
hjordan@jordanconsultants.com

CIC Delegate Di Ann Reid, CSI, CCS, CCCA, LEED AP  
(713) 844-0091  
diann\_reid@gensler.com

**2010—2011 CSI HOUSTON WEBSITE**

Webmaster Lisa Murray, CSI, CCS, LEED AP  
(713) 294-7387  
lisa@mosaicdesignspec.com

**2010—2011 CSI FOUNDATION**

President Frank Bain, CSI  
(713) 827-8844  
fbain@wallcoveringsintl.com

Vice President Robert M. Cook, CSI, AHC

Secretary Dorothy Gumm Denison, CSI, CCS

Treasurer Brett Wilbur, CSI, CCS, RA

At Large Position 1 Harold W. Woolard, FCSI

At Large Position 2 Greg L. Roberts, FCSI, CCS, CCCA, FAIA

At Large Position 3

**CSI SOUTH CENTRAL REGION**

President Kathleen Liles, CSI, CDT (713) 854-6783 kannliles@aol.com	Director, Dorothy Gumm Denison, CSI, CCS (713) 962-4209 dotgumm@sbcglobal.net
Vice President Holly Jordan, CSI, CCS, LEED AP, SCIP (713) 366-0320 hjordan@jordanconsultants.com	Webmaster, Lisa Murray, CSI, CCS, LEED AP (713) 294-7387 lisa@mosaicdesignspec.com

# August 2011

## President's Message

by Robert M. Cook, CSI, AHC

I am very encouraged by our chapters diversity and everyone's willingness to share their vast knowledge with others in our industries. I know all of you know someone in your workplace who could benefit from their involvement in CSI. Please encourage them to join our organization - especially those who are younger and coming up through the ranks. They will be the ones who carry on for all of us going forward.



On that note I wanted to talk about a subject that is near and dear to my heart, as my parents were both school teachers, that of our school and education systems. I am the father of 6 children and will soon have 20 grandchildren. I am scared to death when thinking about what their futures may hold and how to give them as much of a head start in life as I can. With budget restrictions across the country everyone is tasked with doing more with less, not just in education but in all of our businesses as well. I would encourage you all to get involved in your communities and especially in a local school. Volunteer to help in any way possible. Local churches sponsor schools and help with maintenance and mentoring programs. Studies have shown the better the school environment the better the test scores, and this leads to student success in the long run. Our future rests with the young people in our community, and CSI's future rests with recruiting young people into our organization.

Continue to enjoy your summer, and I will see you with your guests at the August meeting.

## CSI CONSTRUCT 2011 IS CALLING FOR EDUCATION PROGRAM TOPICS

By Dorothy Gumm Dennison, CSI, CCS  
CSI Institute Director for South Central Region

**Education - September 13-16, 2011**  
**Exhibits - September 14-16, 2011**  
**McCormick Place, Chicago, IL**  
<http://www.constructshow.com>

CSI CONSTRUCT 2011 (CSI NATIONAL CONVENTION) is now accepting submissions for the 2011 education program topics.

CSI CONSTRUCT 2011 is committed to promoting a comprehensive education program for construction and design professionals, including the people they serve, the environment, emerging technology and the economic impact to businesses.

CSI CONSTRUCT 2011 provides an excellent opportunity and venue to showcase the latest **industry updates** and **case studies** for the commercial building and construction market.

For additional information and to submit your propose topic(s) . You can access the information by clicking or copying this link into your browser: <http://www.zoomerang.com/Survey/WEB22AR7QC7G3N>

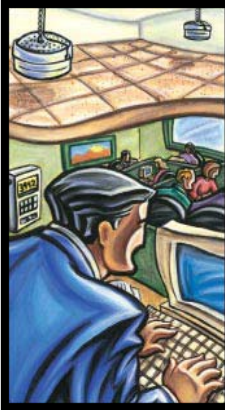
Questions? Contact Carol Wilkins, Sr. Conference Manager, CONSTRUCT2011 at **972-536-6358** or [cwilkins@hanleywood.com](mailto:cwilkins@hanleywood.com).

## CSI National Recruitment Drive

By CSI National

CSI is bringing back the popular [50-50 Recruitment Program](#). In this program, CSI's chapters and the national office coordinate to offer a discount on dues for new members who participate in a local education program.

A revised Member-Sponsor-a-Member campaign will be introduced at [CONSTRUCT2011 & The CSI Annual Convention](#) in September. It will feature communication and marketing tools to facilitate peer-to-peer recruitment.



**Kathleen Liles, CSI, CDT**

7925 County Road 684  
Sweeny, TX 77480

Tel (713) 854-6783  
Toll Free (877) 854-6783  
Fax (979) 345-2099  
Email [kliles@archoustics-south.com](mailto:kliles@archoustics-south.com)  
Web [www.archoustics-south.com](http://www.archoustics-south.com)

## FEATURE YOUR PRODUCTS WITH A TABLE TOP DISPLAY

At each monthly meeting, the Chapter encourages Industry Members to provide a table top display of their products and services for the inspection and education of those attending the meeting.

The table top display is also encouraged to be presented during the social hour and after the program for any questions by attendees.

The presentation fee for this time is \$100 for members and \$150 for non-members, or free with a Golf Sponsorship pledge. See page 10 for details.

## Houston CIC Report

By Di Ann Hassloch, CSI ,CCS, CCCA, LEED AP

**New Construction Codes—Effective 12/31/2010.** On November 3rd, City Council approved the 2006 Code Package to adopt updated Construction Codes. The 2006 International Building Code is the basis for the revised code. The new amendments are available at [http://documents.publicworks.houstontx.gov/documents/divisions/planning/enforcement/06\\_ibc\\_amendments.pdf](http://documents.publicworks.houstontx.gov/documents/divisions/planning/enforcement/06_ibc_amendments.pdf) They are not currently available for purchase.

**Texas Adopts New Energy Code 2009 IECC effective April 1st, 2011.** The major points to be guided by for the building envelope are:

- All commercial projects will need insulated glass. No more monolithic exceptions for small window to wall ratios.
- All commercial projects will need to exhibit an SHGC (Solar Heat Gain Coefficient) of .25 or less. This is a major revision and improvement to save energy for our building owners. There are exceptions for projection factors i.e. shading.

As published in the Texas Register today: ADOPTED RULES June 4, 2010 35 TexReg 4727

### Current codes in the City of Houston include:

- **Building Code:** 2006 IBC with Houston Amendments.
- **Residential Code:** 2006 IRC with Houston Amendments.
- **Electrical Code:** 2008 NEC with Houston Amendments—3rd Printing.
- **Mechanical Code:** 2006 UMC with Houston Amendments.
- **Plumbing Code:** 2006 UPC with Houston Amendments.
- **Fire Code:** 2006 International Fire Code


Please be advised that the new Commercial Energy Codes have been delayed; a new effective date will be announced.



- Solarban<sup>®</sup> Solar Control Low-E Glasses
- Oceans of Color<sup>®</sup> Spectrally Selective Tinted Glasses
- DURANAR<sup>®</sup> SPF ENERGY STAR-compliant high-performance coatings
- CORAFLO<sup>®</sup> ADS colorful, field-applied fluoropolymer coatings
- CORAFLO<sup>®</sup> and ENVIROCRON<sup>®</sup> Zero-VOC powder coatings
- Pure Performance<sup>®</sup> Zero-VOC paint from Pittsburgh<sup>®</sup> Paints
- Megaseal<sup>®</sup> Hygienic Industrial and Commercial Flooring Systems



To find out more information about PPG Architectural Glass, Coatings and Paint, go to: [www.ppgideascpes.com](http://www.ppgideascpes.com)

Contact:  Carl Metzroth, CSI, at 281-610-4854, or e-mail: Metzroth@ppg.com  
Deron Patterson, CSI, at 281-841-0829, or e-mail: Patterson@ppg.com

*The only Cradle to Cradle Certified<sup>CM</sup> Architectural Glass*

### WHERE IS YOUR BUSINESS ADVERTISEMENT?

- A quarter page ad is only \$250 for 12 issues
- A half page ad is only \$500 for 12 issues
- A business card ad is only \$225 for 12 issues

Contact Don Smith at  
(713) 688-0092 or  
[don.smith315@sbdglobal.net](mailto:don.smith315@sbdglobal.net)  
for more information.

## CSI BOARD MEETING MINUTES

### Houston Chapter CSI

Location: **HESS Building - 5430 Westheimer Road - Houston, TX**  
July 25, 2011

Present: Amy Peevey, Betsy Finch, Bill Fairbanks, Chuck Vojtech, Di Ann Reid, Don Smith, Doug Frank, Holly Jordan, James Sandoz, Lisa Murray, Logan Vits, Mark Koehler, Neil Byrne, Tom Atwell

President-elect James Sandoz called the meeting to order at 4:07 p.m.

### REPORTS

**Member Services:** Neil Bryne

Programs: Janet Babineaux

No report.

Membership: Amanda Carrington

No report.

Awards: Amy Salmeron

No report.

**Finance/Administration:** Don Smith

Treasurer's Report: Chuck Vojtech

Budget for 2011-2012 was presented. Number and categories were noted to be the same as last year. There were several concerns noted and referred for further review and clarification.

Table Top Display: Holly Jordan

There would be no table top display at this month's chapter meeting. Pricing was discussed and confirmed that members may purchase a table top for \$100 and non-members for \$150.

**Public Services:** Lisa Murray

Golf Tournament: Holly Jordan

Holly reported sponsorship forms will be available at the check-in table at the chapter meeting and the golf committee had their first meeting.

Spec.tectonics: Don Smith

Don reported the July newsletter was posted on the website and included information about CSI regional and national.

Electronic Communications: Lisa Murray

Lisa reported there is still a problem with Classic Labs, they have not released the domain name. She is working with them on this situation. Members are to provide any changes in their contact information to Lisa.

Public Relations: Logan Vits

Logan mentioned he will be in contact with AIA and other organizations and provide them with our monthly chapter meeting information.

**Professional Development:** Mark Koehler

Continuing Education: Mark Koehler

Mark reported our AIA status is up for renewal and he will handle this.

Academic Affairs:

Mark stated this position has to be filled. Mark spoke with Robert Byrne about chairing the position and is waiting for his response.

Certification: Holly Jordan

Holly reported the CDT study classes will start August 3 and will be held at Wallcoverings International, 1012 Campbell Road. The fee is \$75 for members and \$100 for non-members.

Technical Committee: J. Peter Jordan

No report.

**Scholarship:** Frank Bain

No report.

**New Business:**

Tax Exemption Issue Status: Tom Atwell

No report.

Approval of Foundation Board officers: Frank Bain

This will be presented at the August 2011 Board Meeting.

Paypal Payment:

Board discussed this situation and will need further clarification regarding Paypal and fees.

Fellows Reception:

A reception has been planned for September 21, 2011 by Holly Jordan and she asked for a donation from CSI Houston Chapter. Tom Atwell, Bob Cook, Don Smith and Chuck Vojtech will review this.

Membership Directory: Tom Atwell

Tom has volunteered to work on updating the membership directory.

Note that these meeting minutes have not been approved by the Chapter Board due to lack of quorum.

Meeting adjourned at 5:35 p.m.

**Betsy Finch, CSI**  
**Chapter Secretary**

## Using CSI National to Find Your Next Job

### By CSI National

Here are some ideas for using CSI if you're looking for a job, or think you might need to start looking in the next few months. CSI members with other ideas are urged to post them in CSI's forums. Conducting a job hunt?

1. **Visit CSI's Career Center.** You can post a resume and read job postings from across the country for free. Visit the Career Center.
2. **Join a CSI chapter and go to the meetings.** Your local CSI chapter is plugged in to construction in your area. Spend time with people who know which firms are hiring, and who could recommend you. Find a chapter.

Improve your resume:

1. **Get your CDT, or advanced certification.** Show potential employers that you are an expert. CSI chapters offer preparation courses and mentoring for exam candidates – another opportunity for you to expand your network. Learn more about CSI Certification. The early registration deadline for the fall exam cycle is July 26, 2011.
2. **Write a technical article for Construction Specifier magazine.** Contact the Specifier with your article idea at [editor@constructions specifier.com](mailto:editor@constructions specifier.com).
3. **Be a speaker for a CSI Webinar.** To submit a presentation complete this form and then email it to [jnorris@csinet.org](mailto:jnorris@csinet.org).
4. **Participate in CSI.** Potential employers are likely to Google your name while considering you. Give them something worth finding:
  - Expert responses to questions in CSI's forums. (Log in before you post a response to have your name appear with your response.)
  - Your membership in a CSI committee or task team at the national, region or chapter level. (See a list of national committees and task teams.)
  - Join CSI's LinkedIn group. (Create a free profile on LinkedIn, then search for "CSI" under groups.)
5. **Tweet what you know!** Create a free profile at [www.twitter.com](http://www.twitter.com) and start sharing what you know about construction and CSI. Then let CSI know by sending a tweet to CSIConstruction. CSI follows and promotes CSI chapters and members that tweet.

Your CSI membership can be a valuable tool in your job hunt! Good luck!

## CDT Training Classes

By Holly Jordan, CSI, CCS, CCCA, LEED AP

The Construction Documents Technology (CDT) classes will be held at Wallcoverings International (1012 Campbell Rd) Wednesday evenings from August 3rd through September 22nd (one Thursday) (6-8 PM).

Classes will be \$75.00 for CSI members and \$100.00 for members to cover materials and incidentals. RSVP to Holly Jordan at [hjordan@jordanconsultants.com](mailto:hjordan@jordanconsultants.com) or (713) 366-0320 if you would like to attend or if you have any questions.

**The Construction Documents Technology (CDT) Program** provides a comprehensive overview for anyone who writes, interprets, enforces, or manages construction documents. Project architects, contractors, contract administrators, material suppliers, and manufacturers' representatives are all realizing the advantages of being Construction Documents Technologists.

The objective of the CDT Program is to improve construction documentation and to accomplish the following:

1. Allow individuals to demonstrate through examination their knowledge of CSI's recommended practices in:
  - a. Construction process
  - b. Contractual relationships
  - c. Relationship and organization of construction documents
2. Encourage individuals to become familiar with the fundamental principles of specification writing and construction document organization as recommended by CSI.

This is a great opportunity to absorb the necessary background and information to pass the CDT exam given by CSI. It also dovetails nicely with the CD portion of the ARE exam subject matter. In addition, the following was taken from the NCARB ARE e-News (<http://www.ncarb.org/idp/enews/2009/may/index.html>):

**Interns in the NCARB IDP must acquire 700 training units to satisfy the IDP Training Requirement.**

**One training unit equals eight hours of acceptable training in an acceptable work setting.**

- **CSI Construction Documents Technologist (CDT) Certification**

Maximum Training Units Allowed: 5

A copy of your certificate must be submitted to NCARB to receive credit.

- **CSI Construction Specifier (CCS) Certification**

Training Category A - Specifications and Materials Research

Maximum Training Units Allowed: 5

A copy of your certificate must be submitted to NCARB to receive credit. (Note: this cannot be combined with EPC activities for satisfaction of minimum training units in this area.)

- **CSI Construction Contract Administrator (CCCA) Certification Training Category B - Construction Phase—Office**

Maximum Training Units Allowed: 5

A copy of your certificate must be submitted to NCARB to receive credit. (Note: this cannot be combined with EPC activities for satisfaction of minimum training units in this area.)

### FEATURE YOUR PRODUCTS WITH A TABLE TOP DISPLAY

At each monthly meeting, the Chapter encourages Industry Members to provide a table top display of their products and services for the inspection and education of those attending the meeting.

The table top display is also encouraged to be presented during the social hour and after the program for any questions by attendees.

The presentation fee for this time is \$100 for members and \$150 for non-members.



## Membership Chair Report

By Chuck Vojtech, CSI, CDT

Houston Chapter Statistics

**Member Type:**

**Total:** 156 (100%)

**Industry:** 26 (16.67)

**Intermediate:** 11 (7.05%)

**Professional:** 110 (70.51%)

**Professional Emeritus:** 2 (1.28%)

**Professional Lifetime:** 1 (0.64%)

**Professional Retired:** 1 (0.64%)

**Student:** 5 (3.21%)

We would like to recognize our newest members who have joined in April 2011.

Kevin Gilbert – Tremco, Inc

We would also like to recognize members who have celebrated anniversaries with CSI in the month of May:

Robert Alford – 31 Years

Eric Banks – 1 Year

Heidi Bouley – 1 Year

Doug Frank – 33 Years

Peter Gross – 6 Years

Jim Hodges – 12 Years

James Krueger – 14 Years

John Loper – 5 Years

George Pontikes – 1 Year

Di Ann Reid – 13 Years

Harold Woolard – 21 Years

Everyone is encouraged to reach out to colleagues, coworkers, customers, vendors and students to join CSI and get involved.

Thank you for your participation in CSI Houston!

*CSI Board / Planning Meeting—Buffalo WW*

### WHERE IS YOUR BUSINESS ADVERTISEMENT?

A quarter page ad is only \$250 for 12 issues

A half page ad is only \$500 for 12 issues

A business card ad is only \$225 for 12 issues

Contact Don Smith at

(713) 688-0092 or

[don.smith315@sbdglobal.net](mailto:don.smith315@sbdglobal.net)

for more information.

## CSI CONSTRUCTION 2011 & THE CSI NATIONAL CONVENTION, Sept 2011, Chicago, Illinois

By Dorothy Gumm Denison, CSI, CCS, Institute  
Director from the South Central Region

Register now to attend CONSTRUCTION 2011 & THE CSI ANNUAL CONVENTION to be held in Chicago Sept. 2011.

For the first time, all 10 CSI regions accepted an invitation from the CSI Board and sent representatives to participate in Board training conducted at the Minneapolis board meeting, and to network with national leaders and one another. During a workshop of region leaders, they developed mission statements and value propositions for their individual regions, and discussed the role of regions in today's CSI. They will meet again at CSI convention.

From the CSI President Paul Bertram, the Institute mission this coming year will be focused on how CSI can increase and retain membership.



# 22nd Annual CSI Golf Tournament

## Brian T. Harrington Golf Classic

### TOURNAMENT SPONSORSHIP FORM (Due by September 30, 2011)

*Oakhurst Golf Club, 20700 Mills Branch - Porter, TX 77365 – 281.354.4653*  
Monday, October 10, 2011 (Modified Shotgun Start 1:00 p.m.)

<b>SPONSORSHIPS AVAILABLE:</b>	Cost (Number Available)	Contribution
GOLD	\$2,000	\$ _____
SILVER	\$1,000	\$ _____
BRONZE	\$600	\$ _____
LUNCH BUFFET	\$750 (1)	\$ _____
AWARDS / BBQ DINNER	\$750 (1)	\$ _____
BEVERAGE CART	\$500 (2)	\$ _____
HOLE-IN-ONE CONTEST	\$400 (1)	\$ _____
RAFFLE PRIZE	\$400 (1)	\$ _____
HOLE	\$150	\$ _____
	Total Contribution	\$ _____

(please print)

NAME/TITLE \_\_\_\_\_  
 COMPANY NAME \_\_\_\_\_  
 MAILING ADDRESS \_\_\_\_\_  
 CITY, STATE, ZIP \_\_\_\_\_  
 PHONE & FAX \_\_\_\_\_  
 EMAIL ADDRESS \_\_\_\_\_

**[ ] Please include my company's promotional items in each player's "gift bag."**<sup>(\*)</sup>

*Make checks payable to "CSI - Houston" and send to:*

*Robert Cook  
19027 Ridge Hill Court  
Houston, Texas 77084*

*(\*) Promotional items are to be delivered by September 30th to Holly Jordan c/o Jordan Consultants, 50 Briar Hollow Lane, Suite 235W  
Houston, Texas 77027, (713) 366-0320.*

The sponsorship forms must be received at CSI by September 30th.

Note: All sponsors who qualify will receive a free tabletop presentation at monthly CSI Chapter Meetings.

## “Strictly SMITH-ly”

by Donald F. Smith, Jr., CSI CCS AIA LEED AP

### What Does It Take to Build a Building?

Remembering that Drawings show the scope of what is involved in the completed Work, where work is located, arrangement, size, relationships, and quantity required; while specifications give the performance, appearance, quality, function and source requirements for materials, products, and equipment and procedures required to achieve a specific result. It also helps to remember that the Drawings and Project Manual only describe the work as contemplated at completion. They are not a recipe to achieve the end result.

A colleague contacted me the other day to discuss the topic of semi-automated specification masters replacing the specification writer.

The more critical questions that were unasked are “Who is the Architect going to pick to make the 400,000 or so decisions that go into a Project Manual?” Think of the rapidly changing construction and regulatory environment that surrounds every project. “Does your semi-automated master respond to local laws, ordinances, construction practices, material and product availability?” Whoever edits the semi-automated specifications will need to make these decisions based upon the latest laws, ordinances, and construction practices that bear on the project. “Who writes and coordinates the invitation to bid, instructions to bidders, bid forms, bond forms, and conditions of the contract?” Some of these documents contain subjects that are business decisions, legal decisions, and all will most likely bear on the cost of the work and are beyond the scope of the Architects practice. Also, “How will the Architect make a reasonable effort to achieve value for his client?”

Of course everyone on an Architects staff is fluent in all these areas of architectural practice including the coordination of closely related work and requirements of the bidding documents, contract for construction, and the conditions of the contract that effect the Architects administration of the contract for construction.

The architectural profession has rapidly grown to the point that the Project Manual needs to be written and coordinated by someone with both a detailed and broad current knowledge of the practice of Architecture and related engineering

disciplines. Who on and Architects team has the knowledge, skill, and experience to carry out the decisions that relate to the project requirements?

Everything that the Architect does not define to be performed by engineering consultants, remains with the Architect to perform. And of course, the Architect is responsible to his client and the public for all of the work of the project team for each project that he performs.

How can a semi-automated specification master address all of these decisions and duties? Who will be qualified to push the buttons? A person that only performs this task every six months to several years apart? Or, a person who by training and exposed by experience to make these decisions every day and who knows when to ask for additional information? Most of these semi-automated specification masters are programed to edit specifications based upon answers that the specification editor gives to a select list of questions posed in the master. Suppose the master doesn't ask all the right questions for your particular project. It is a lot harder to concentrate on missing information when you are concentrating on a question of what to do.

Now consider cutting up these 400,000 decisions and placing some of the information in BIM property notes and some in the Project Manual. How do you comply with the CSI rule of saying it once and saying it in the best place and still create a clear understandable set of requirements.

You can easily see the need of an expert with a cast iron stomach!

**"Good judgment comes from experience, and experience comes from bad judgment."**

Barry LePatner, Esq.

... Just My Opinion

**Donald F. Smith, Jr., CSI, CCS, RA, LEED™ AP**



SPEC.TECTONICS is a monthly publication of the Houston Chapter, Construction Specifications Institute. CSI HOUSTON does not approve, disapprove, sanction, or guarantee the validity or accuracy of any date, claim, or opinion appearing herein. Republication rights are granted to the CSI and its chapters for original articles printed herein, provided proper credits are given. The Houston Chapter is incorporated under the laws of the State of Texas, and is chartered by the Construction Specifications Institute.

## CSI Houston

Construction Specifications Institute  
 P.O. Box 79285  
 Houston, TX 77279-9285  
 (713) 627-2283, Ext. 319

[www.csihouston.org](http://www.csihouston.org)

Visit CSI Houston  
 on the Web

[www.csihouston.org](http://www.csihouston.org)

## August Through September 2011

Sun	Mon	Tue	Wed	Thu	Fri	Sat
JULY 26	AUG 1	2	3	4	5	6
7	8	9 CSI Planning Meeting—Hin's Garden	10	11	12	13
14	15	16	17	18	19	20
21	22 CSI Houston Board / Chapter Meeting	23	24	25	26	27
28	29	30	31	SEPT 1	2	3
4	5	6	7	8	9	10
11	12	13 CSI Planning Meeting—Hin's Garden	14	15	16	17
18	19	20	21	22	23	24
25	26 CSI Houston Board / Chapter Meeting	27	28	29	30	OCT 1